

Churchill Northern Studies Centre

Subarctic Research and Education Since 1976

The Churchill Northern Studies Centre is an independent non-profit organization dedicated to supporting research and education initiatives in Churchill. The Centre is open year-round to provide logistical services to scientists working in the western Hudson Bay region. In addition to supporting world-class research, we are also proud to offer a wide variety of educational programs to the general public. Course participants have the unique opportunity to learn more about their chosen topic directly from renowned scientists and naturalists. Most importantly, all course revenues go towards supporting the work of the Centre and the local economy.



CNSC Learning Vacations

The CNSC is, first and foremost, an active research facility located at the edge of the tundra, 23 km from the Town of Churchill. Our Learning Vacations promote meaningful interaction between course participants, visiting scientists and the Centre's own in-house research staff.

Programs are typically 5-days in length and include all accommodations, meals, local transportation, wildlife viewing excursions, visits to local museums/shops and, of course, evening lectures on a range of topics from wildlife to aboriginal culture. A sampling of traditional foods and Canadian wines on the last evening provides an excellent opportunity to reflect on your experiences and new friendships.

Guests share bunkbed-style accommodations, typically 4-6 people per room and separate male and female washrooms with shower facilities. All linens are provided, but personal toiletries are not. Delicious meals are served three times a day in our cafeteria. Vegetarian, low-salt and other special dietary options are available upon request.

Other Course Offerings

Exploritas: Adventures in Lifelong Learning

Additional dates for many of these same great programs are offered in association with Exploritas, a not-for-profit organization dedicated to providing extraordinary learning adventures for people 55 years of age and older. Call us at (204) 675-2307 or visit www.exploritas.org for more information on program topics, dates and costs.

FOR RESERVATIONS CONTACT:

Churchill Northern Studies Centre
Box 610
Churchill, Manitoba, Canada R0B 0E0

(204) 675-2307
(204) 675-2139 (fax)
cnscc@churchillscience.ca
www.churchillscience.ca



Help us
Understand and sustain the North
by booking your northern adventure today!



Follow Your Dreams, Experience Our North



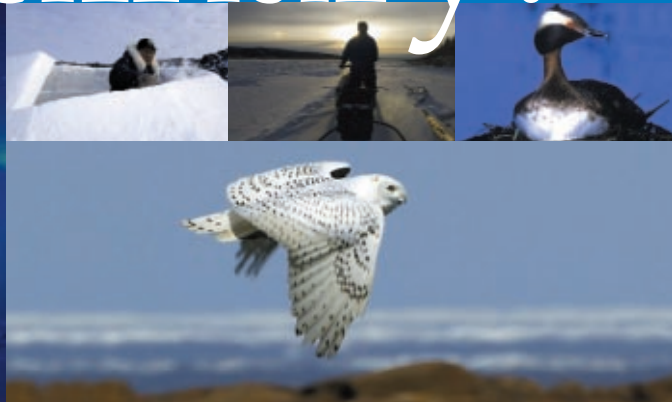
CHURCHILL, MANITOBA

**CNSC 2010
LEARNING VACATIONS**

Churchill Northern Studies Centre
Box 610, Churchill, Manitoba, Canada R0B 0E0
tel: (204) 675-2307 fax: (204) 675-2139
cnscc@churchillscience.ca
www.churchillscience.ca



extraordinary!



Winter Skies

Aurora and Astronomy • February 13 - 18, 2010
\$ 989 CDN Participants: 16

Churchill, Manitoba is one of the best spots on Earth to view the *Aurora borealis*, the spectacular atmospheric phenomenon better known as the Northern Lights. For more than 240 years, astronomers and physicists have journeyed to Churchill, situated directly beneath the aurora oval, to probe the upper atmosphere with cameras, balloons, and even rockets. Now you can learn more about this stunning lightshow, from traditional folklore to the latest scientific findings. View the aurora from the comfort of our heated viewing dome by night and explore the Churchill area by day. Local tours, cultural presentations and an afternoon of dog mushing offer a taste of life in the subarctic. The Churchill Northern Studies Centre, your home for five days, sits in the shadow of massive 1950's era rocket launch towers. As the lights arc overhead in curtains of white, green and red, you'll swear you can hear the countdown. ❄️

North of 58°

The Subarctic in Winter • March 18 – 23, 2010
\$ 900 CDN Participants: 10

Journey beneath the snow into a secret world where shrews weighing less than a dime forage for insects and lemmings scurry along vast tunnel systems. Explore an amazing landscape where grey jays lay their eggs at 40 below zero and wood frogs freeze solid, only to thaw with the coming of spring. Rethink the popular misconception that only the largest and hardiest animals survive the brutal subarctic winter. Learn how local cultures adapted to such an unforgiving environment by sleeping **OUTSIDE** (if you like...) in an igloo or quinzhee built with your own hands. If that's not your thing, you can always relax in a nice warm bed while the northern lights shimmer out your window. A traditional dog sled ride through the forest, snow sampling with CNSC research staff and a trip onto the sea ice of Hudson Bay by snowmobile round out this truly unique experience. ❄️

Spring's Wings

Birding in Churchill • June 3 – 10, 2010
\$ 950 CDN Participants: 9

After nearly 8 months of snow and cold, Churchill comes alive with the carillon cry of returning snow geese – by the hundreds of thousands – and the ice in the river begins to move. Join the migration and explore the excellent birding opportunities to be found in Churchill, Manitoba, a well-known birding “hotspot” that you'll have to experience to believe. Daily guided tours and field trips allow you to see a wide variety of bird species and to search for such rarities as the Ross's gull, bohemian waxwing and Harris' sparrow. Some unique birds common to Churchill include the Pacific loon, jaegers, willow ptarmigan and Smith's longspur. Our programs are led by birding experts with decades of experience and group sizes are kept to a minimum. There is also ample opportunity to explore the town and the world-famous Eskimo Museum with its renowned collection of historic and contemporary Inuit art and artefacts. ❄️



Belugas in the Bay

Biology of the Beluga Whale • July 15 – 20, 2010
\$ 1125 CDN Participants: 16

The Churchill River estuary is one of the summering grounds for the largest population of beluga whales in the Arctic. Nowhere else in the world can you get as up close and personal with these charming and highly vocal whales. While other beluga populations deal with the threats of pollution and population decline (or both), Churchill's whales migrate to the river to feed, give birth and moult their skin. As a participant in Belugas in the Bay, you will have three opportunities to view beluga whales on the Churchill River. Once by large jet boat, once by zodiac and finally, under your own power by river kayak. Whales are only one part of the experience, you will also enjoy a walking tour of Prince of Wales Fort and Cape Merry National Historic Site. Evening lectures by marine biologists and local cultural presenters help round out this truly educational experience. ❄️

FOR RESERVATIONS CONTACT:

Churchill Northern Studies Centre, Box 610,
Churchill, Manitoba, Canada R0B 0E0
TEL: (204) 675-2307
FAX: (204) 675-2139
cnscc@churchillscience.ca
www.churchillscience.ca



LORDS OF THE ARCTIC

Hudson Bay's Polar Bears

October 26 – November 2 or November 9 – 16, 2010
\$ 2525 CDN
Participants: 34

Witness the annual migration of Churchill's polar bears. Every October and November, polar bears congregate in the Churchill area to await the return of the sea ice and access to the seal hunting grounds. Spend two full days touring the Churchill Wildlife Management Area aboard a custom-built tundra vehicle for an excellent firsthand view of polar bears in their natural habitat. Each evening, in-depth presentations by bear biologists explore this remarkable animal and the challenges they are facing in a warming climate. And if that were not enough, this program also includes a 45 minute helitour along the rugged coastline of Hudson Bay, an afternoon of dog sledding and a tour of the community, including the world-famous Eskimo Museum and its renowned collection of historic and contemporary Inuit art and artefacts. *What more can we say?* This is our most popular program and truly a once-in-a-lifetime educational experience – **book early!** ❄️

Our most popular program just got better!

For 2010, we've extended our *Lords of the Arctic* program to seven days allowing even more time to interact with your instructor and visiting scientists. Each program will now feature participation in an actual observational research study on polar bears. Not only will you get to observe polar bears in their natural environment, but as a “researcher for a day” you will contribute directly to our understanding of these magnificent animals. ❄️

